




ELOS
 environmental
<http://elosenv.com/>
 43177 East Pleasant Ridge Road
 Hammond, Louisiana 70403
 P. 985-662-5501, F. 985-662-5504

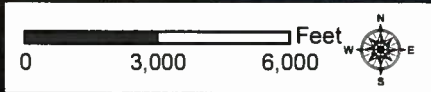








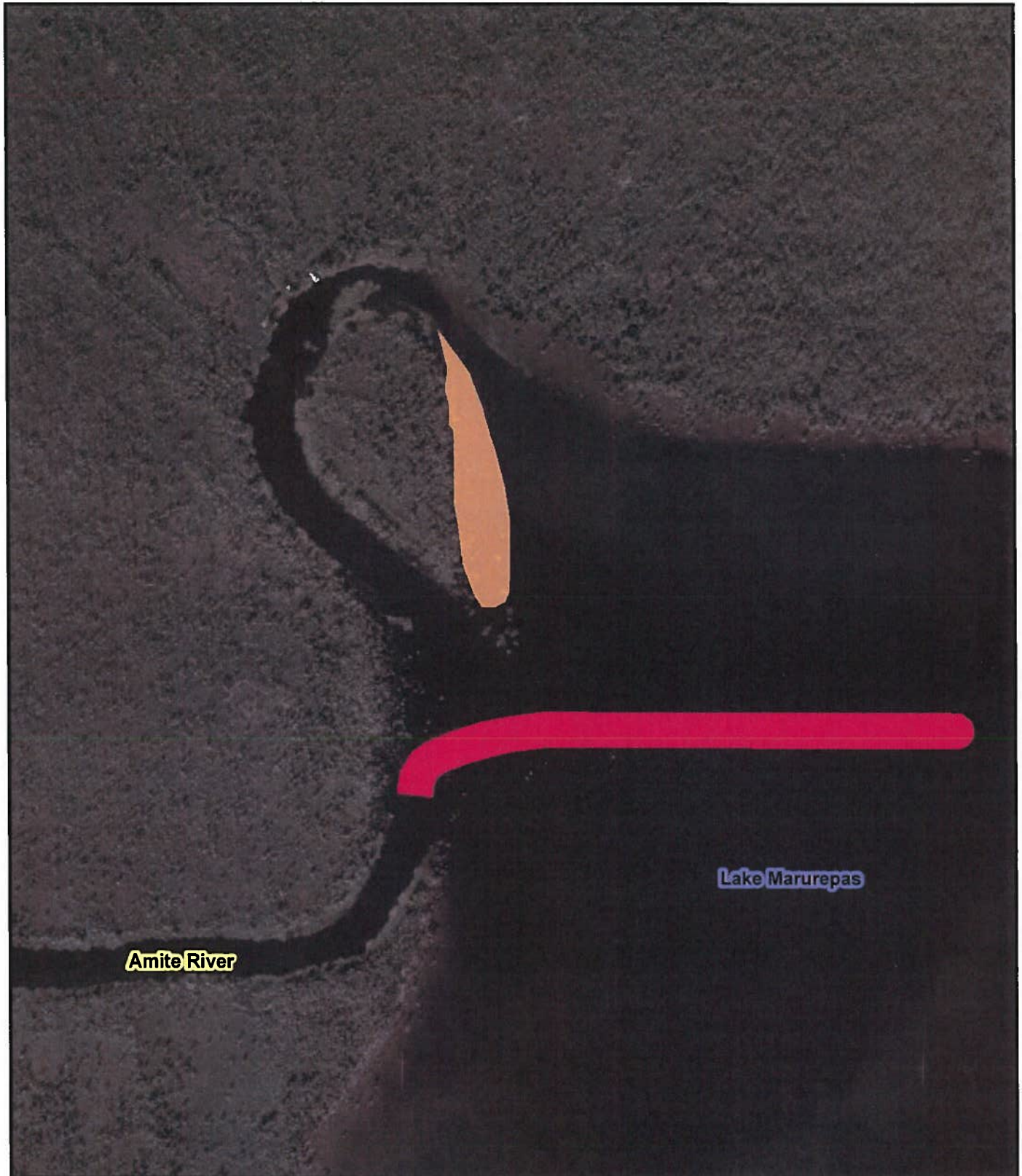
Figure 1: TopoVicinity Map


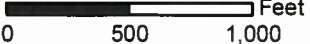

Livingston Parish Marsh Creation

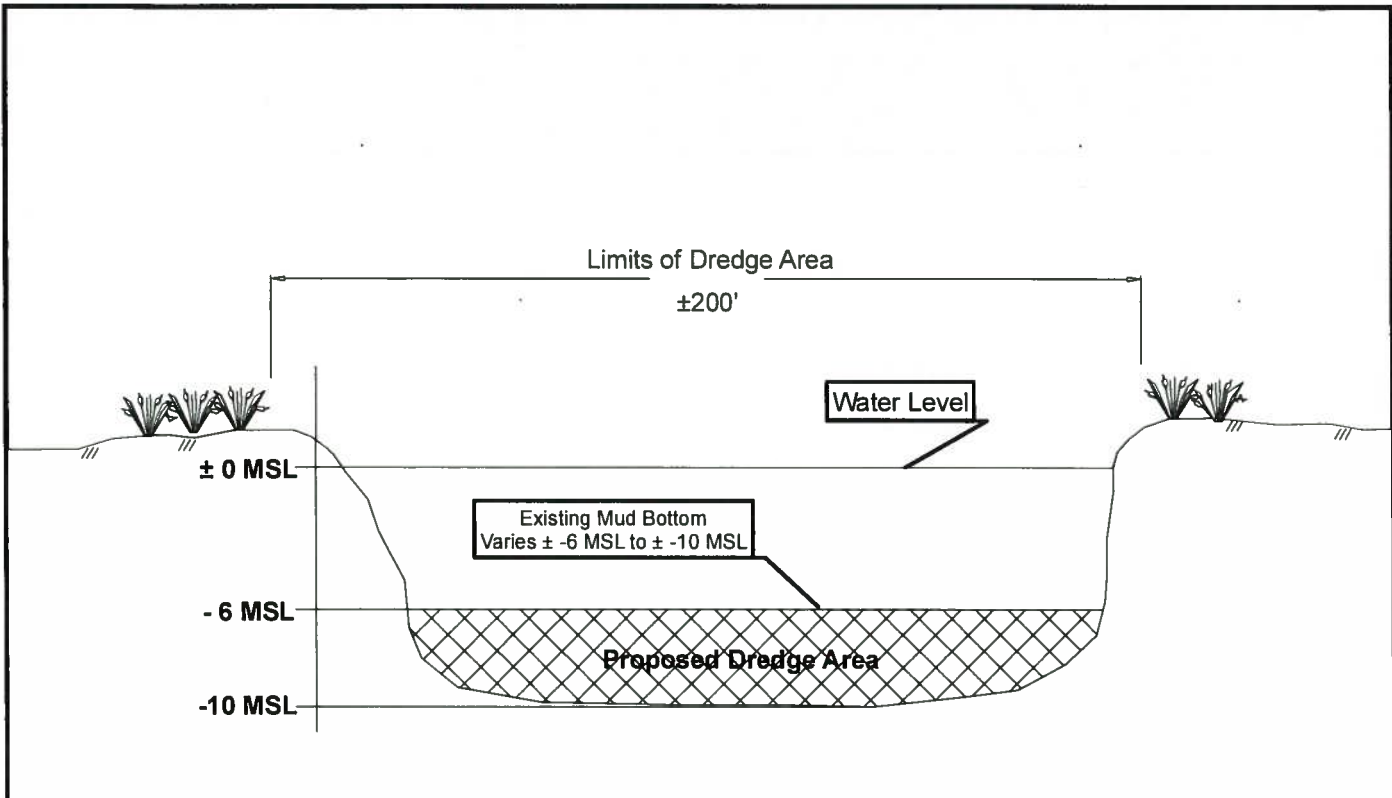
Legend:

 Proposed Dredge	 Waters
 Proposed Fill Area	 Stream/River
 Cities/Towns	 Roads

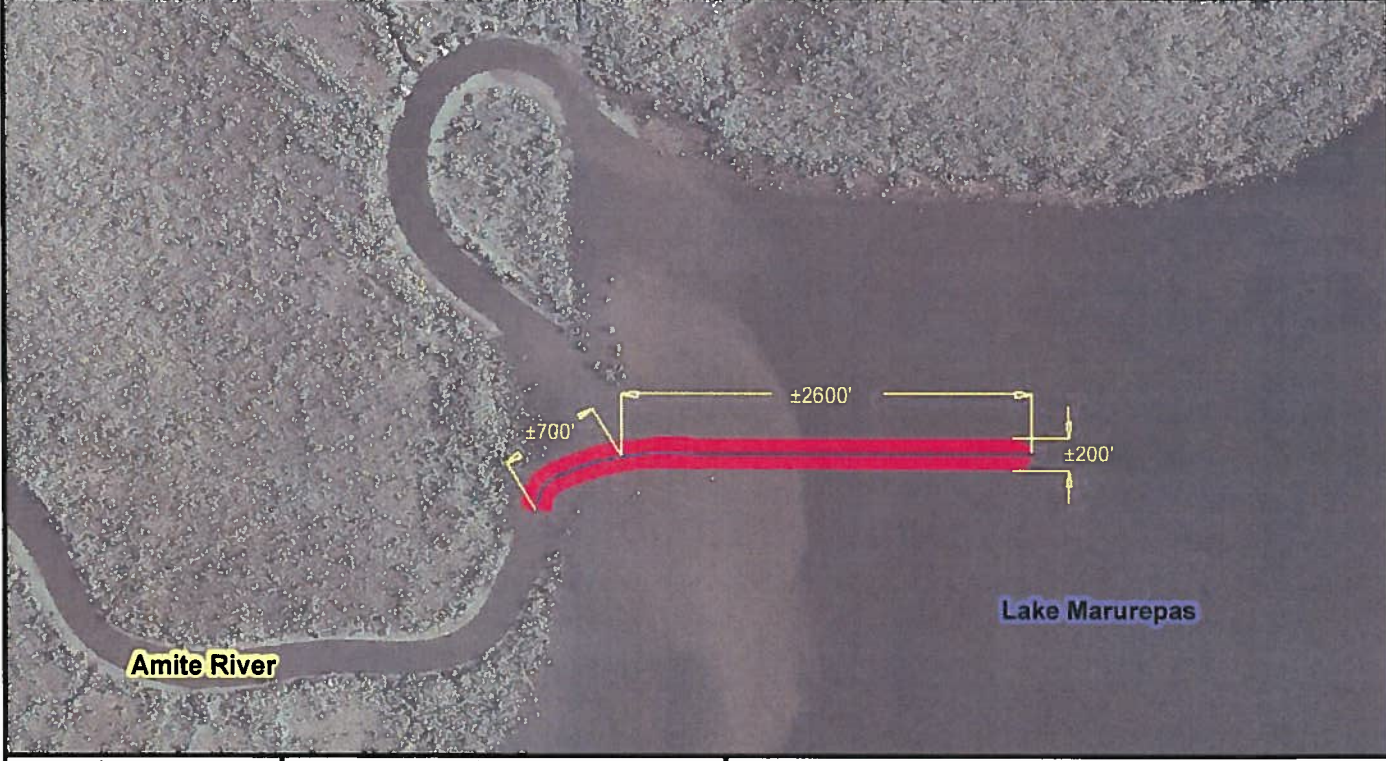
Map prepared from public and proprietary spatial data. Elos Environmental, LLC does not warrant its accuracy or completeness. This map should not be used to establish legal boundaries or specific locations.



 <p>ELOS environmental http://elosenv.com/ 43177 East Pleasant Ridge Road Hammond, Louisiana 70403 P 985-662-5501, F 985-662-5504</p>	 	<p>Legend:</p> <ul style="list-style-type: none"> Proposed Fill Area Proposed Dredge
	<p>Figure 2: 2014 Aerial</p>	
	<p>Livingston Parish Marsh Creation</p>	
<p>Map prepared from public and proprietary spatial data. Elos Environmental, LLC does not warrant its accuracy or completeness. This map should not be used to establish legal boundaries or specific locations.</p>		



Assumed ± 0 MSL for calculation purposes.



ELOS
environmental
<http://elosenv.com/>
43177 East Pleasant Ridge Road
Hammond, Louisiana 70403
P. 985-662-5501, F. 985-662-5504

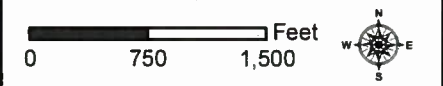


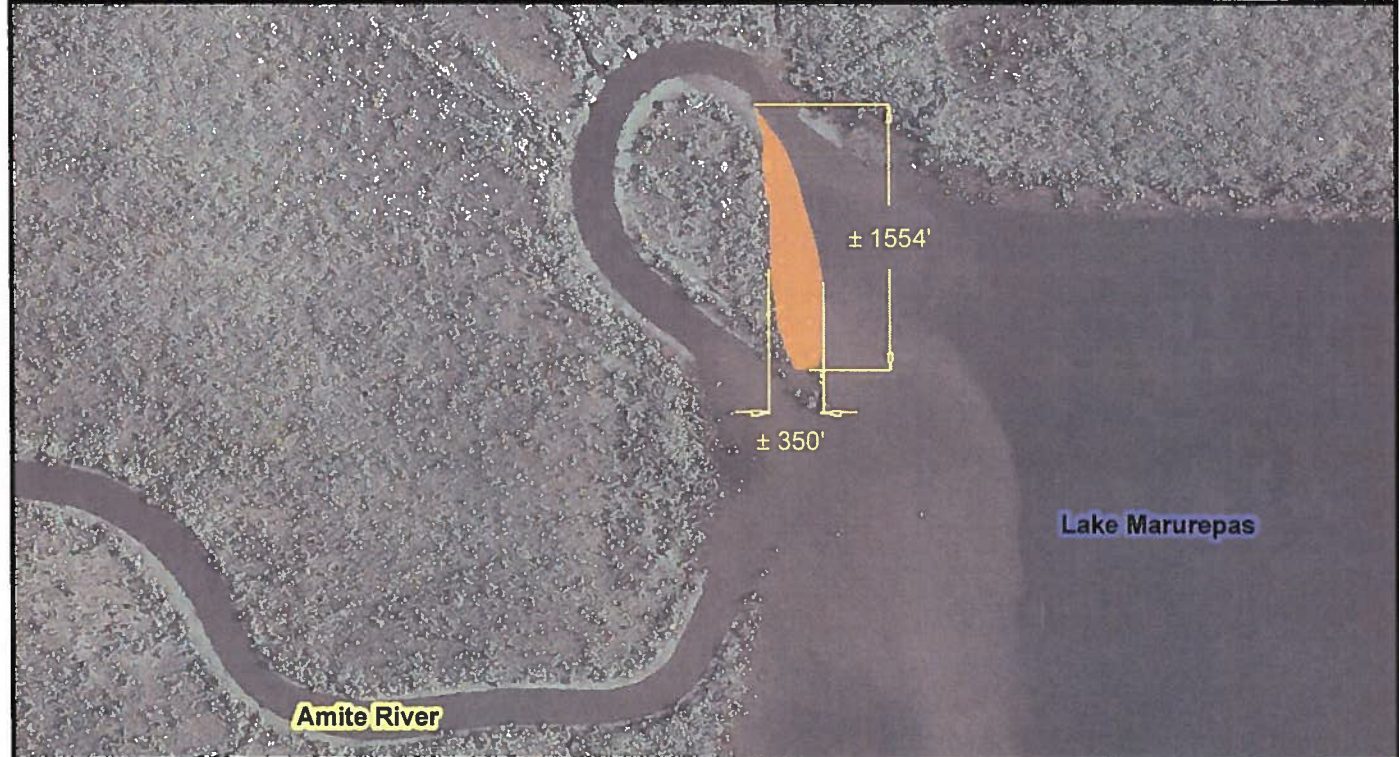
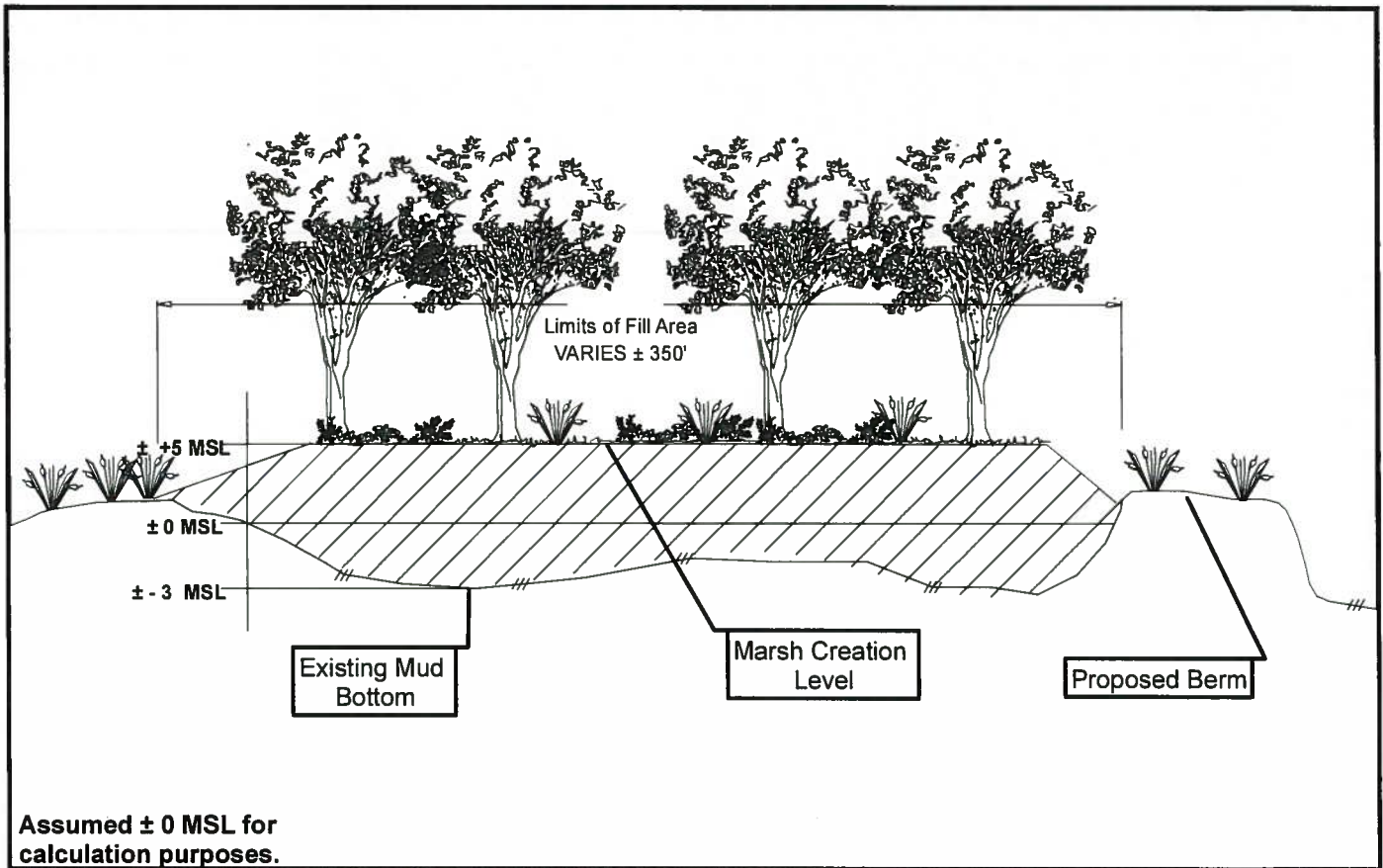
Figure 3: Typical Dredge

**Livingston Parish
Marsh Creation**

Legend:

- Proposed Dredge Centerline ± 3300'
- Proposed Dredge ± 15.01 Acres
± 97,777 cu yds

Map prepared from public and proprietary spatial data. Elos Environmental, LLC does not warrant its accuracy or completeness. This map should not be used to establish legal boundaries or specific locations.



ELOS
environmental
<http://elosenv.com/>
43177 East Pleasant Ridge Road
Hammond, Louisiana 70403
P. 985-662-5501, F. 985-662-5504

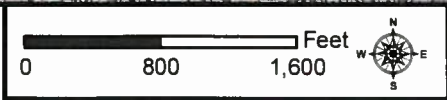


Figure 4: Typical Fill

**Livingston Parish
Marsh Creation**

Legend:

Proposed Fill Area
± 96,428 cu yds
± 7.47 Acres

Map prepared from public and proprietary spatial data. Elos Environmental, LLC does not warrant its accuracy or completeness. This map should not be used to establish legal boundaries or specific locations.